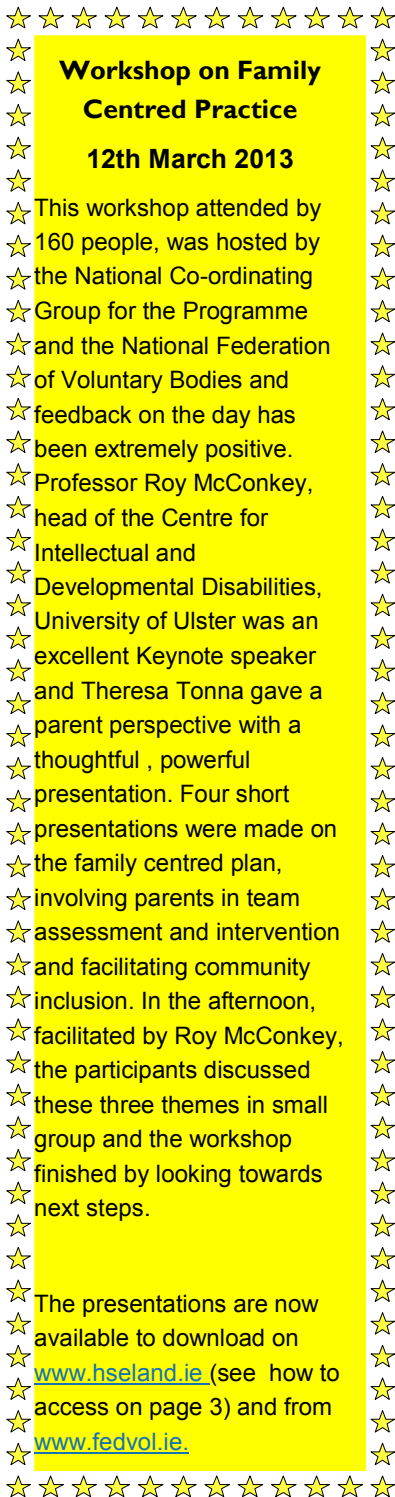




Keeping you informed about this national programme for the restructuring of children's disability services



Workshop on Family Centred Practice 12th March 2013

This workshop attended by 160 people, was hosted by the National Co-ordinating Group for the Programme and the National Federation of Voluntary Bodies and feedback on the day has been extremely positive. Professor Roy McConkey, head of the Centre for Intellectual and Developmental Disabilities, University of Ulster was an excellent Keynote speaker and Theresa Tonna gave a parent perspective with a thoughtful, powerful presentation. Four short presentations were made on the family centred plan, involving parents in team assessment and intervention and facilitating community inclusion. In the afternoon, facilitated by Roy McConkey, the participants discussed these three themes in small group and the workshop finished by looking towards next steps.

The presentations are now available to download on www.hseland.ie (see how to access on page 3) and from www.fedvol.ie.

About the programme

The programme 'Progressing Disability Services for Children and Young People' aims to achieve a national unified approach to delivering disability health services, so that there is a clear pathway to the services they need for all children regardless of where they live, what school they go to or the nature of their disability or delay.

When the programme is completed early intervention and a school age teams will look after all children with complex needs in a defined geographic network area, regardless of the nature of their disability. These teams will be supported by specialist services when a high level of expertise is required.

The Health Service as a whole has to operate within the funding available to it and given the current economic environment, this has become a major challenge for all stakeholders, including the HSE, voluntary service providers, service users and their families. However we need to make the best possible use of the resources we have, and if we work to get the structure right we will have strong foundations to build on.

The programme also involves our partners in the education sector to ensure we are working together to achieve the best possible outcomes for children.

Donegal Focus Group

The HSE in Donegal made contact with a focus group of young people aged between 13-18 to ascertain their view on the paediatric therapy services they were receiving in Donegal. This session was facilitated by the consumer services manager in the Primary Community & Continuing Care and a young adult with a physical disability who had been working with the group over the last 2 years. The findings from this group will enable us to roll out the school age teams in Donegal to reflect on the needs of the children from the beginning and the current Early Intervention team their services in light of the information provided.

The feedback for the most part was positive with good relations with their therapist noted as a key factor. They wanted a more child friendly environment in some therapy areas which has been duly noted.

These young people were part of a Genio advocacy project that was run over the last few years by the HSE physical and sensory service. They are now very capable of putting forward their thoughts in relation to many issues regarding their needs.

Denise Curran

REGIONAL LEADS

South(Kerry, Cork, Waterford Wexford Carlow, Kilkenny, South Tipperary)

Aisling Lenihan

Aisling.lenihan@hse.ie

West (Donegal, Sligo, Leitrim, West Cavan, Roscommon, Mayo, Galway, Clare, Limerick North Tipperary)

Gerard Tully

Gerard.tully@hse.ie

Dublin Mid Leinster (Dublin South of the Liffey, Wicklow, Kildare, Laois, Offaly, Longford, Westmeath)

Bernie Nyhan

Bernie.nyhan@hse.ie

Dublin North East (Dublin north of the Liffey Meath, Louth, Cavan, Monaghan)

Anne Melly

anne.melly@hse.ie

Everyone who will be affected by these changes should make sure they are in touch with what is happening locally. Contact your Regional Lead to find out about how you can get involved.

South

North & South Lee

In February local leads met with approximately 200 staff who will work on network services and/or refer to services during information sessions. These were very informative sessions for local leads and the local service managers in terms of planning for training and skill mix. Input was very constructive and will form the basis for working groups and inform local planning. Well done to all who attended bringing a quality and child centred focus to planning in the Cork area.

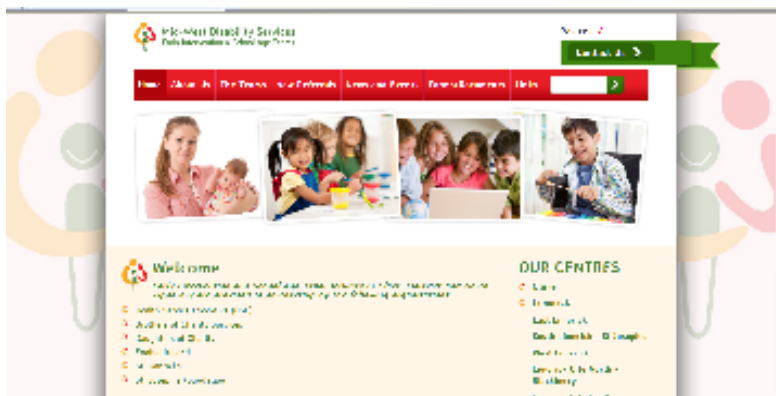
Aisling Lenihan

West

Midwest

Midwest Children’s Disability Services have launched a new website—www.mwcds.ie.

The site contains useful information for professionals and parents on Early Intervention and School Age Disability Teams in the Mid West Region.



Referrers and parents can use the website to access information on the services provided, including contact details for teams, information on the geographical areas and schools served by each team, details of access criteria and referral forms. The website also provides links to other services which may be of interest. We will be adding more content to the website all the time, and would welcome any suggestions regarding additional content.

In tests we have found that some users with older internet browsers may have difficulty opening the site, and may need to upgrade their browser to view all content on the site.

We hope that users find this website useful.

Aisling Ryan



Dublin North East

Cavan Monaghan

Cavan Monaghan Service Area Children's Services Forum

As part of the Progressing Disability Services for Children and Young People, the Cavan Monaghan Service Area commenced the Children's Services Forum on 31st January 2013. The Forum was established to ensure children within Cavan Monaghan Service Area can access the appropriate Paediatric Service based on their clinical needs. The Forum reviews cases and facilitates onward referral where it is unclear what is the most appropriate service or combination of services for the child. The membership brings together key representatives from Health, Child & Family, and Education services

At these meetings the Forum members put forward their concerns and outline the needs of the child. The Chair ensures the Forum takes on board the professional's opinions, and the appropriate referrals are put in place. The Forum has the ability to make collective decisions to ensure a more integrated service for each case referred to the Children's Services Forum. The case is then reviewed at the next meeting. The role of the Chair rotates between the members of the Forum, and the current Chair is Brieghe Byrne, Assessment Officer. The Forum takes place on the last Wednesday of every month.

Access Criteria Demonstration Site

The Cavan Monaghan HSE Area has been chosen as a demonstration site to test the Draft National Policy on Access to Services for children with disability or developmental delay. When introduced, the policy aims to bring greater consistency and equity to the access to services across the country.

During the test period from 1st March to 31st July, all new referrals to the Early Intervention Service (Enable Ireland) and the Child Development Team (School aged service) will be reviewed by the teams in the light of the new criteria. Following the completion of the test, which is across four sites in the country, there will be a report on the results, with recommendations for any revision of the policy.

Caralyn Horne

Dublin Mid Leinster

Kildare/West Wicklow

Kildare's Parents Sub Group for Progressing Disabilities has been up and running since February 2012 and we presently have nine members who meet once a month in Naas. Two representatives from the group are on the local implementation planning group and others are members of the various subgroups involved in moving the process forward.

The group would like to highlight that they now have an e mail contact that is available to Kildare/West Wicklow parents—haveyoursayhere@gmail.com and would welcome any feedback to this address from parents.

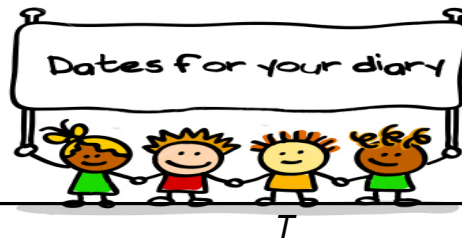
Lorraine Ashe

HSE change hub

This is the HSE's Learning and Development website which is open for all to enrol, not just HSE staff. There is a wealth of information and written material of interest on this site, including the Progressing Disability Services for Children & Young People programme. When you have enrolled go to **Practice and Development Hubs**, then click on the **Change Hub**. On the top line you will see **Reconfiguration Resources**, click on that and open **Progressing Children's Disability Services**. You will find the key documents such as the Report of the Reference Group on Multidisciplinary Services for Children and guidelines as they are issued, plus an extensive library of existing service documents and relevant articles.

Don't forget to visit the site for updated documentation.





T

The HSE, working in partnership with Brothers of Charity Southern Services, Enable Ireland (Children's Services) and St John of Gods (Children's Services) invite you to an

Information Session for Parents

on

Wednesday 17th April 2013 at 6pm

in

The Canteen,
Kerry Community Services Building,
Rathass, Tralee

Or alternatively

on

Monday 22nd April 2013 at 10.00 am

in

Kerry Diocesan Youth Service,
Fairhill, Killarney

Information will be provided on the planned reconfiguration of children's services in Kerry.

HSE Meath Children's Disability Service (6-18 Team) **Information Session for new and existing service users**

[Get information/resources](#)

[Meet other parents](#)

[Find out about the service](#)

Friday Morning 19th April at 10:30am

Dunshaughlin Health Care Centre

or

Friday Morning 10th May at 10:30 am

Climber Hall Kells (out the Oldcastle road.)

The children's disability team have compiled an **information/resource pack** for parents/ carers of children who have been referred to the service.

This **information pack** explains who we are and what we do and gives an insight into all aspects of the service. It also contains a list of up to date resources and contacts. This is a useful reference document for you now and in the future. Please attend one of the above sessions.

Each session will last **1 hour** and we will be happy to answer any questions you have.

Confirm your attendance by. Phone 046 9091400 or email: annc.smith@hse.ie or clodaghe.donnely@hse.ie